

Chapter 217

One-Sample T-Test for Superiority by a Margin

Introduction

This procedure provides reports for making inference about the superiority of a response compared to a standard value. The question of interest is whether the mean of the response is better than a standard reference value (S) by a specified margin (M). Another way of saying this is that the treatment is better than the known standard by some value called the *margin*.

Two different test statistics may be used: the parametric one-sample T-Test and the nonparametric Wilcoxon Signed-Rank Test.

Technical Details

Suppose you want to evaluate the superiority of a continuous random variable, X , as compared to a standard value, S . Assume that n observations, X_k , $k = 1, 2, \dots, n$ are available.

Superiority by a Margin Test

This discussion is based on the book by Rothmann, Wiens, and Chan (2012) which discusses the two-independent sample case. These results are easily applied to the one-sample case.

Assume that **higher values are better**, μ represents the population mean of the response, S is a standard reference value, and that M is the positive *superiority margin*. The null and alternative hypotheses are

$$H_0: \mu \leq S + M$$

$$H_1: \mu > S + M$$

If, on the other hand, we assume that **higher values are worse**, then null and alternative hypotheses are

$$H_0: \mu \geq S - M$$

$$H_1: \mu < S - M$$

The one-sample t-test usually tests that the mean is zero. The superiority test compares the mean to a non-zero quantity $S + M$ or $S - M$. This test can also be computed using the One-Sample T-Test procedure.

Assumptions

This section describes the assumptions that are made when you use each of the tests of this procedure. The key assumption relates to normality or non-normality of the data. One of the reasons for the popularity of the t-test is its robustness in the face of assumption violation. Unfortunately, in practice it often happens that more than one assumption is not met. Hence, take the steps to check the assumptions before you make important decisions based on these tests. There are reports in this procedure that permit you to examine the assumptions, both visually and through assumptions tests.

One-Sample T-Test Assumptions

The assumptions of the one-sample t-test are:

1. The data are continuous (not discrete).
2. The data follow the normal probability distribution.
3. The sample is a simple random sample from its population. Each individual in the population has an equal probability of being selected in the sample.

Wilcoxon Signed-Rank Test Assumptions

The assumptions of the Wilcoxon signed-rank test are as follows:

1. The data are continuous (not discrete).
2. The distribution of the data is symmetric.
3. The data are mutually independent.
4. The data all have the same median.
5. The measurement scale is at least interval.

Data Structure

For this procedure, the data are entered as a single column and specified as a response variable.

X1
26
48
19
38
16
16
54
56
87

Example 1 – Superiority by a Margin Test for a Single Sample

This section presents an example of how to test superiority for a single sample. Suppose a new treatment method is being investigated and a measurement was made on each of 100 subjects using the new treatment (Method1). The data are in the **Bland-Altman** dataset. The researchers wish to determine if the treatment response is at least 3 points greater than the known standard value of 40 on average.

Setup

To run this example, complete the following steps:

1 Open the Bland-Altman example dataset

- From the File menu of the NCSS Data window, select **Open Example Data**.
- Select **Bland-Altman** and click **OK**.

2 Specify the One-Sample T-Test for Superiority by a Margin procedure options

- Find and open the **One-Sample T-Test for Superiority by a Margin** procedure using the menus or the Procedure Navigator.
- The settings for this example are listed below and are stored in the **Example 1** settings file. To load these settings to the procedure window, click **Open Example Settings File** in the Help Center or File menu.

Variables Tab	
Response Variable	Method1
Higher Values Are.....	Better
Standard Value.....	40
Superiority Margin.....	3
Reports Tab	
Wilcoxon Signed-Rank Test.....	Checked

3 Run the procedure

- Click the **Run** button to perform the calculations and generate the output.

Descriptive Statistics and Confidence Interval for the Mean (μ)

Descriptive Statistics and Confidence Interval for the Mean (μ)

Variable	N	Mean	Standard Deviation of the Data	Standard Error of the Mean	T*	95% Confidence Interval Limits for the Mean (μ)	
						Lower	Upper
Method1	100	50.72	28.30893	2.830893	1.9842	45.10289	56.3371

This report provides basic descriptive statistics and confidence interval for the response variable.

Variable

The name of the variable for which the descriptive statistics are listed here.

N

The count gives the number of non-missing values. This value is often referred to as the group sample size or count.

Mean

This is the average of the data values.

$$\bar{x} = \frac{\sum_{i=1}^n x_i}{n}$$

Standard Deviation of the Data

The sample standard deviation is the square root of the variance. It is a measure of dispersion based on squared distances from the mean for the variables listed.

$$s = \sqrt{\frac{\sum_{i=1}^n (x_i - \bar{x})^2}{n - 1}}$$

Standard Error of the Mean

This is the estimated standard deviation of the distribution of sample means for an infinite population.

$$SE_{\bar{x}} = \frac{s}{\sqrt{n}}$$

T*

This is the t-value used to construct the confidence limits. It is based on the degrees of freedom and the confidence level.

One-Sample T-Test for Superiority by a Margin

95% Confidence Interval Limits for the Mean (μ) (Lower and Upper)

These are the lower and upper limits of a confidence interval estimate of the mean based on a Student's t distribution with $n - 1$ degrees of freedom. This interval estimate assumes that the population standard deviation is not known and that the data are normally distributed. The confidence interval formula is

$$\bar{x} \pm T_{df}SE_{\bar{x}}$$

One-Sample T-Test for Superiority by a Margin

One-Sample T-Test for Superiority by a Margin

Higher Values Are: Better
 Null Hypothesis (H0): (Mean of Method1) \leq 40 + 3
 Superiority Hypothesis (H1): (Mean of Method1) $>$ 40 + 3

Alternative Hypothesis	Mean	Standard Error	T-Statistic	DF	P-Value	Reject H0 and Conclude Superiority at $\alpha = 0.05$?
$\mu > 43$	50.72	2.830893	2.7271	99	0.00378	Yes

This report shows the parametric one-sample T-Test for superiority by a margin. Since the p -value is less than the designated value of alpha (0.05), the null hypothesis is rejected in favor of the alternative hypothesis of superiority. This test assumes that the data are normal.

Alternative Hypothesis

Assume that μ represents the mean of the response data values, S is a standard reference value, and that M is the positive *superiority margin*. If **higher values are better**, then the null and alternative hypotheses are

$$H_0: \mu \leq S + M$$

$$H_1: \mu > S + M$$

If **higher values are worse**, then null and alternative hypotheses are

$$H_0: \mu \geq S - M$$

$$H_1: \mu < S - M$$

In practice, the alternative hypothesis should be chosen in advance.

Mean

This is the average of the data values.

One-Sample T-Test for Superiority by a Margin

Standard Error

This is the estimated standard deviation of the distribution of sample means for an infinite population.

$$SE_{\bar{x}} = \frac{s}{\sqrt{n}}$$

T-Statistic

The T-Statistic is the value used to produce the p -value (Prob Level) based on the T distribution. The formula for the T-Statistic is:

$$T = \frac{\bar{x} - (S - M)}{SE_{\bar{x}}}$$

DF

The degrees of freedom define the T *distribution* upon which the probability values are based. The formula for the degrees of freedom is:

$$df = n - 1$$

P-Value

The p -value, also known as the probability level or significance level, is the probability that the test statistic will take a value at least as extreme as the observed value, assuming that the null hypothesis is true. If the p -value is less than the prescribed α , in this case 0.05, the null hypothesis is rejected in favor of the alternative hypothesis. Otherwise, there is not sufficient evidence to reject the null hypothesis.

Reject H0 and Conclude Superiority at $\alpha = 0.05$?

This column indicates whether or not the null hypothesis is rejected, in favor of the alternative hypothesis, based on the p -value and chosen α . A test in which the null hypothesis is rejected is sometimes called *significant*.

Wilcoxon Signed-Rank Test for Superiority by a Margin

Wilcoxon Signed-Rank Test for Superiority by a Margin

Higher Values Are: Better
 Null Hypothesis (H0): (Median of Method1) \leq 40 + 3
 Superiority Hypothesis (H1): (Median of Method1) $>$ 40 + 3

Test Details

Sum of Ranks (W)	Mean of W	Standard Deviation of W	Number of Zeros	Number of Sets of Ties	Multiplicity Factor
3246.5	2524.5	290.8105	1	31	792

One-Sample T-Test for Superiority by a Margin

Test Results

Test Type	Alternative Hypothesis	Z-Value	P-Value	Reject H0 and Conclude Superiority at $\alpha = 0.05$?
Exact*	Median > 43			
Normal Approximation	Median > 43	2.4827	0.00652	Yes
Normal Approx. with C.C.	Median > 43	2.4810	0.00655	Yes

* The Exact Test is provided only when there are no ties.

This report shows the nonparametric Wilcoxon Signed-Rank Test for superiority by a margin. Since the p -value is less than the designated value of alpha (0.05), the null hypothesis is rejected in favor of the alternative hypothesis of superiority. This test required no assumption that the data are normal.

Sum of Ranks (W)

The basic statistic for this test is the sum of the positive ranks, $\sum R_+$ (The sum of the positive ranks is chosen arbitrarily. The sum of the negative ranks could equally be used). This statistic is called W .

$$W = \sum R_+$$

Mean of W

This is the mean of the sampling distribution of the sum of ranks for a sample of n items.

$$\mu_W = \frac{n(n+1) - d_0(d_0+1)}{4}$$

where d_0 is the number of zero differences.

Standard Deviation of W

This is the standard deviation of the sampling distribution of the sum of ranks. Here t_i represents the number of times the i^{th} value occurs.

$$s_W = \sqrt{\frac{n(n+1)(2n+1) - d_0(d_0+1)(2d_0+1)}{24} - \frac{\sum t_i^3 - \sum t_i}{48}}$$

where d_0 is the number zero differences, t_i is the number of absolute differences that are tied for a given non-zero rank, and the sum is over all sets of tied ranks.

Number of Zeros

This is the number of times that the difference between the observed data and the hypothesized value is zero. The zeros are used in computing ranks but are not considered positive ranks or negative ranks.

Number of Sets of Ties

The treatment of ties is to assign an average rank for the particular set of ties. This is the number of sets of ties that occur in the data, including ties at zero.

One-Sample T-Test for Superiority by a Margin

Multiplicity Factor

This is the correction factor that appeared in the standard deviation of the sum of ranks when there were ties.

Test Type

This is the type of test that is being reported on the current row. The Exact Test is provided only when there are no ties.

Alternative Hypothesis

For the Wilcoxon signed-rank test, the null and alternative hypotheses relate to the median. The left-tail alternative is represented by Median < S - M (i.e., H_a : Median < S - M) while the right-tail alternative is depicted by Median > S + M.

Exact Probability: P-Value

This is an exact p -value for this statistical test, assuming no ties. The p -value is the probability that the test statistic will take on a value at least as extreme as the actually observed value, assuming that the null hypothesis is true. If the p -value is less than α , say 5%, the null hypothesis is rejected. If the p -value is greater than α , the null hypothesis is accepted.

Exact Probability: Reject H0 and Conclude Superiority at $\alpha = 0.05$?

This is the conclusion reached about the null hypothesis. It will be to either fail to reject H_0 or reject H_0 at the assigned level of significance.

Approximations with (and without) Continuity Correction: Z-Value

Given the sample size is at least ten, a normal approximation method may be used to approximate the distribution of the sum of ranks. Although this method does correct for ties, it does not have the continuity correction factor. The z value is as follows:

$$z = \frac{W - \mu_W}{\sigma_W}$$

If the correction factor for continuity is used, the formula becomes:

$$z = \frac{W - \mu_W \pm \frac{1}{2}}{\sigma_W}$$

Approximations with (and without) Continuity Correction: P-Value

This is the p -value for the normal approximation approach for the Wilcoxon signed-rank test. The p -value is the probability that the test statistic will take a value at least as extreme as the actually observed value, assuming that the null hypothesis is true. If the p -value is less than α , say 5%, the null hypothesis is rejected. If the p -value is greater than α , the null hypothesis is accepted.

One-Sample T-Test for Superiority by a Margin

Approximations with (and without) Continuity Correction: Reject H0 and Conclude Superiority at $\alpha = 0.05$?

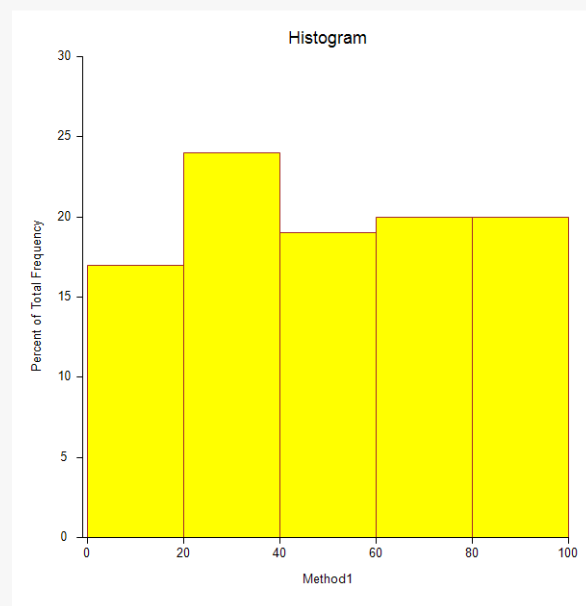
This is the conclusion reached about the whether to reject null hypothesis. It will be either Yes or No at the given level of significance.

Test of the Normality Assumption**Test of the Normality Assumption**

Normality Test	Test Statistic	P-Value	Reject the Assumption of Normality at $\alpha = 0.05$?
Shapiro-Wilk	0.9580	0.00292	Yes

The main assumption when using the t-test is that the data come from a normal distribution. The normality assumption can be checked statistically by the Shapiro-Wilk normality test and visually by the histogram or normal probability plot.

This section reports the results of a diagnostic test to determine if the data are normal. In this case, they are not, probably because of the outliers that were present. This would indicate that the Wilcoxon Signed-Rank Test would be the better test to use.

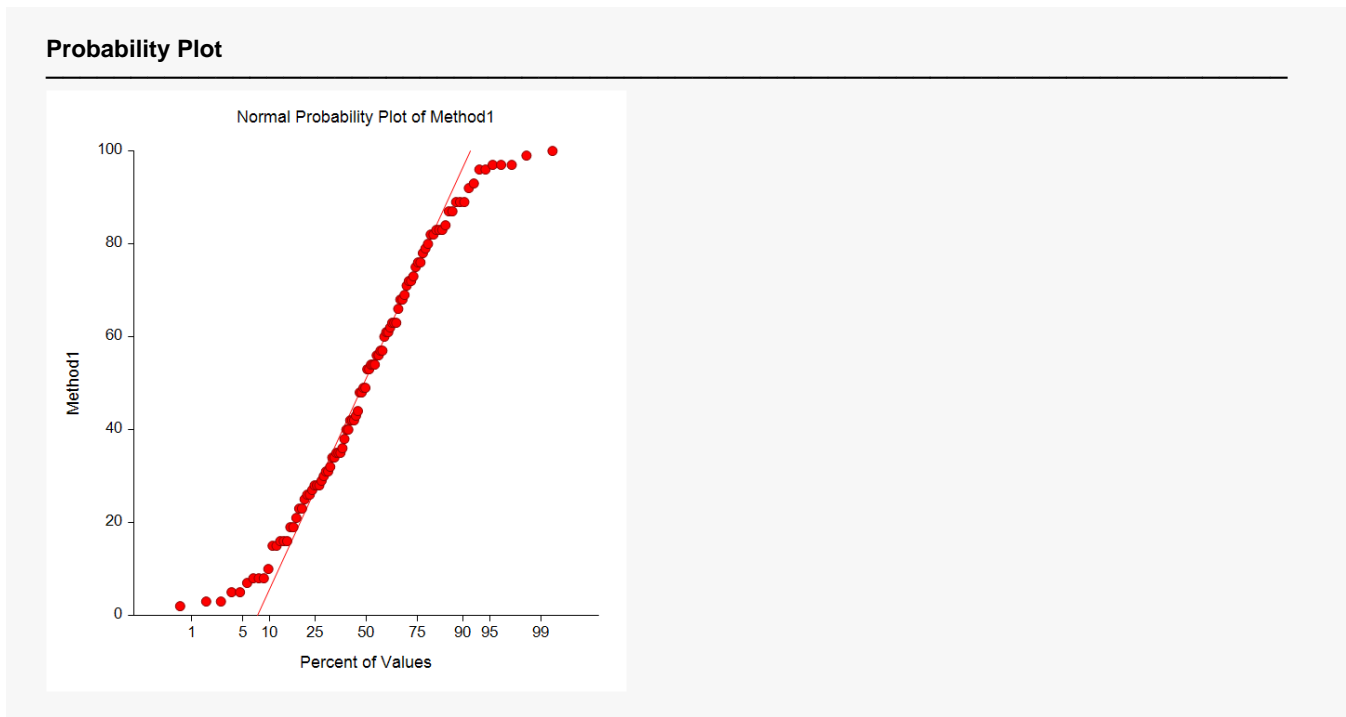
Histogram**Histogram**

The nonparametric tests need the assumption of symmetry, and these two graphic tools can provide that information. Since the histogram's shape is impacted by the number of classes or bins and the width of the

One-Sample T-Test for Superiority by a Margin

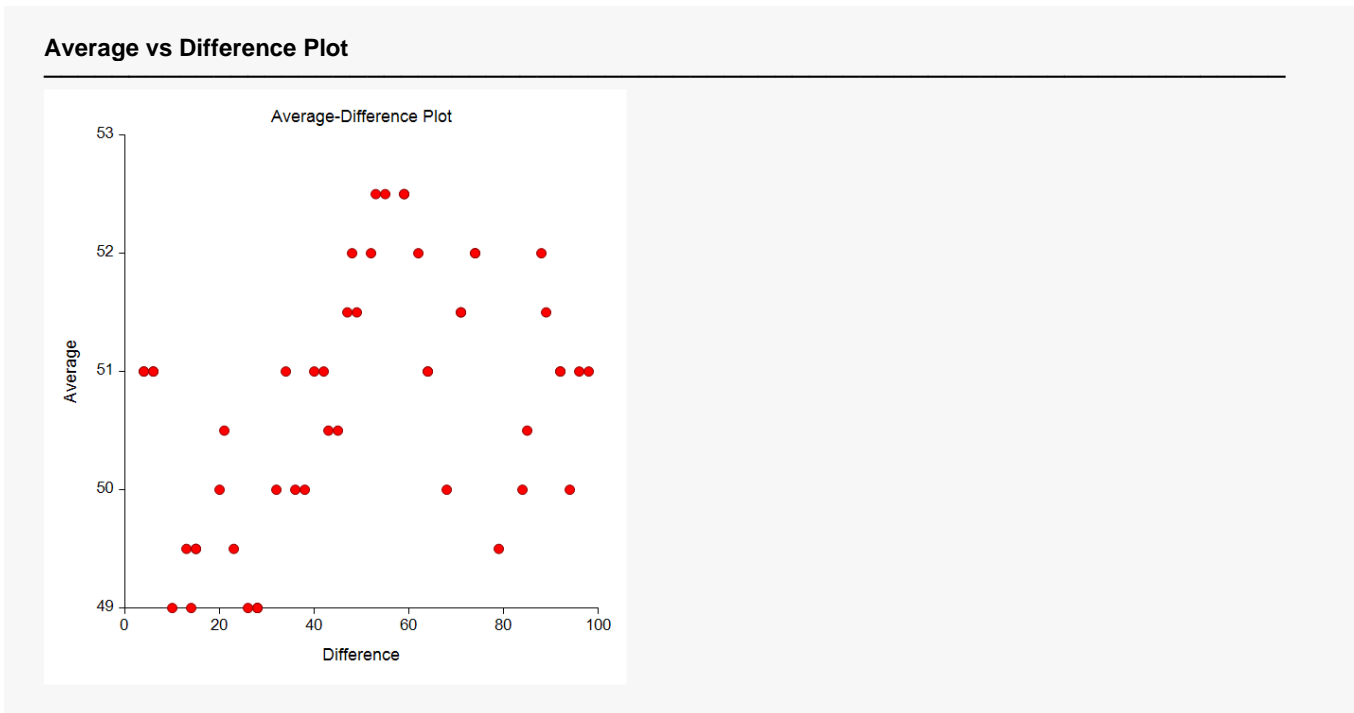
bins, the best choice is to trust the density trace, which is a smoothed histogram. If the distribution of data is symmetrical but not normal, proceed with the nonparametric test.

Probability Plot



If any of the observations fall outside the confidence bands (if shown), the data are not normal. The goodness-of-fit test mentioned earlier should confirm this fact statistically. If only one observation falls outside the confidence bands and the remaining observations hug the straight line, there may be an outlier. If the data were normal, we would see the points falling along a straight line. Note that the confidence bands are based on large-sample formulas. They may not be accurate for small samples.

Average vs Difference Plot



This average-difference plot is designed to detect a lack of symmetry in the data. This plot is constructed from the original data. Let $D(i)$ represent the i^{th} ordered difference. Pairs of these sorted differences are considered, with the pairing being done as you move toward the middle from either end. That is, consider the pairs $D(1)$ and $D(n)$, $D(2)$ and $D(n-1)$, $D(3)$ and $D(n-2)$, etc. Plot the average versus the difference of each of these pairs. Your plot will have about $n/2$ points, depending on whether n is odd or even. If the data are symmetric, the average of each pair will be the median and the difference between each pair will be zero. Symmetry is an important assumption for the t-test. A perfectly symmetric set of data should show a vertical line of points hitting the horizontal axis at the value of the median. Departures from symmetry would deviate from this standard.